

Continuous input drive module STM 40

Controlling SSR-Relays with analog signals

Features

- Direct mounting on the terminals of solid-state-relays
- Multi-purpose (switch selected) device for 0/4 ... 20 mA, 0 ... 10 V DC and resistance (poti) input
- Isolated logic output-signal 0/8 V DC
- Clock cycle approx. 1s
- Power on and clock indicator with LED
- Supply voltage 10.8 ... 30 V DC and 17 ... 30 V AC
- Driving max. 3 SSR-Relays in parallel mode (not in potentiometer mode)



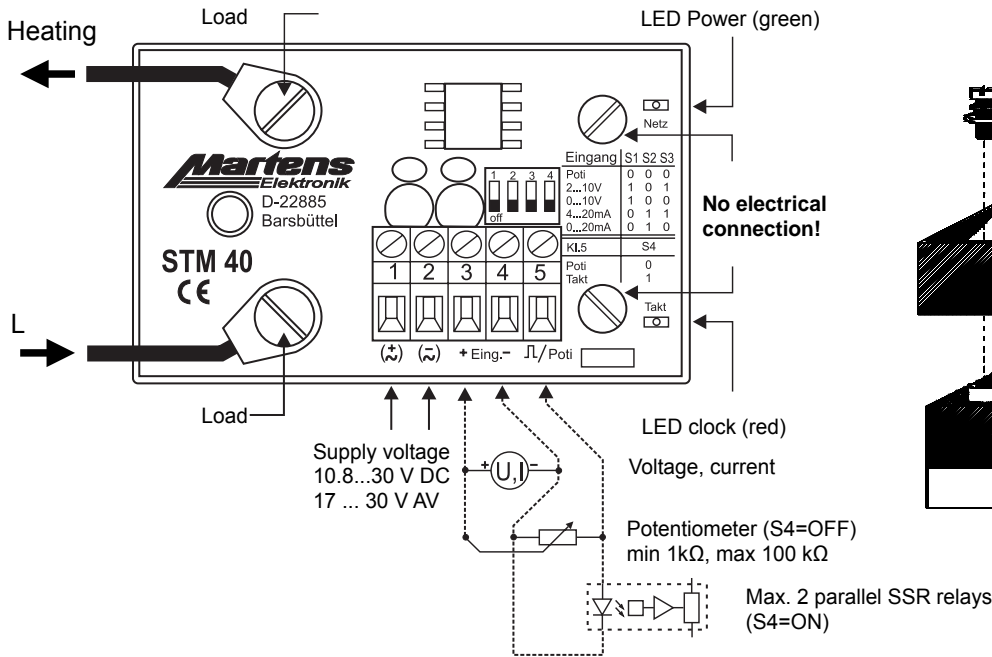
General information

STM40 modules are used in temperature control systems in connection with solid-state-relays (SSR). It converts continuous input-signals from SPS or other controllers into a pulse-width-controlled signal, suitable to operate with SSR. Input-signal may be 0/4 ... 20 mA or 0 ... 10 V or an external potentiometer. One STM40 module can drive additional 2 external SSR-relays, except when operating in potentiometer mode.

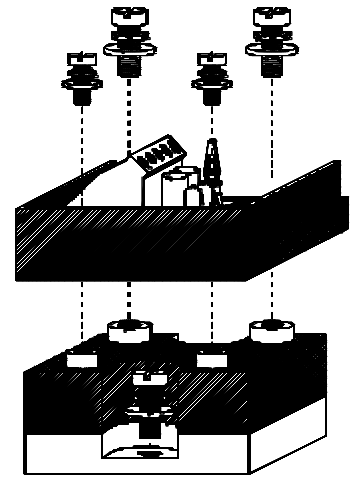
Technical data

Supply voltage	: 10.8...30 V DC, 17...30 V AC
Frequency AC	: 47...63 Hz
Power consumption	: approx. 1.3 VA
Working temperature	: -10...+60 °C
CE - conformity	: EN55022, EN60555, IEC16000-4-4/5/11/13
Test voltage	: 500 V between input and power supply
Voltage input	: Ri=40 kΩ, 3 x overload protected
Current input	: Ri=125 Ω, 3 x overload protected
Resistor input (S1...4=OFF)	: or potentiometer 1...100 kΩ
Output clock	: bistable 0/8 V DC, max. 20 mA, short circuit protected
Output clock terminal 5 (S4=ON)	: output signal for max. 2 solid state relays (SSR) bistable 0/8 V DC, max. 20 mA, short circuit protected
Clock cycle	: approx. 1 second
Load clamp cover	: acc. to German BGV A3 (included by delivery)
Connection	: screw terminals flexi wire max. 2.5mm ² , single wire max. 4 mm ²
Mounting	: on solid state relays, D-type
Dimension	: 46 x 75 x 24 mm (W x L x H)

Connection diagram



Mounting



Input configuration

Input	S1	S2	S3
0 ... 1/100kΩ*	OFF	OFF	OFF
2 ... 10V DC	ON	OFF	ON
0 ... 10V DC	ON	OFF	OFF
4 ... 20mA	OFF	ON	ON
0 ... 20mA	OFF	ON	OFF

* see additional functions

Additional functions

Terminal 5	S4
Poti: Potentiometer 1... 100 kΩ connected at terminals 3, 4 and 5	OFF
Clock: max. 2 extern SSR relays at terminals 4 and 5	ON

Ordering code

STM40 - 1. - 2.

- Terminal connection** (including) fitting for SSR-relays with
 - US US-thread 6-32/8-32
 - M3/M4 DIN-thread M3/M4
 - M3/M5 DIN-thread M3/M5

- Options**
 - 00 without option

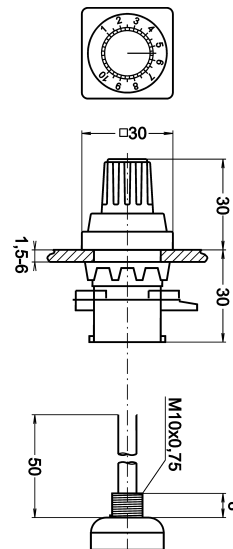
Accessory

PES30-10k

Potentiometer installation set
 22,5mm hole, protection IP65
 complete with 10 kΩ poti (wire)

Potentiometer installation set

PES30-10k



Module STM40 complete delivered with all mounting parts.