

# Panel Mounted Products Series TH25

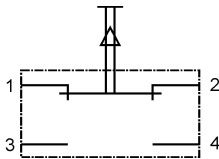
## Contact blocks



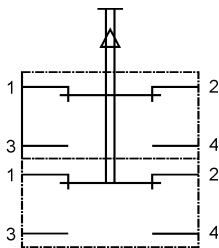
### Technical Data

|                       |   |
|-----------------------|---|
| Contact block case    | : Self-extinguishing duroplastic (UL94+V0)  |
| Contact material      | : Silver alloy (AgCu3F40); for low voltages and currents 5µm gold plating (AgAu 0,5µm)                  |
| Operating temperature | : -25 ... 80 °C   |
| Approval              | : SEV, VDE, DEMKO, NEMKO, UL and CSA  |
| Acceleration          | : 10 g onto every level   |
| Vibration             | : Amplitude 1.5 mm pp at 55 Hz<br>: Key drop total 3.5 mm   |
| Mechanism             | : Spring contact with low vibration and optimal self cleaning   |
| Mechanical life       | : approx 2 x 10 <sup>6</sup> operating cycles   |
| Switching capacity    | : 250 V AC/5 A 24 V DC/3 A (restive load)   |
| DC load               | : 12 V/3 A, 24 V/2 A, 36 V/1,7 A, 48 V/1.5 A, 60 V/1.2 A 125 V/0.3 A, 250 V/0.2 A (ind. load L/R=15 ms) |
| Elektrical life       | : approx. 7 x 10 <sup>4</sup> operating cycles 5A, 250 V AC (cos φ 0.7)                                 |
| Contact resistance    | : Au ≤ 20 mΩ<br>Ag ≤ 50 mΩ  |

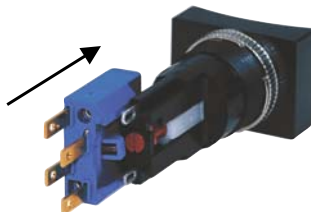
| Contact blocks |                     | Faston       | Solder      |
|----------------|---------------------|--------------|-------------|
|                |                     | 2.8 x 0.5 mm |             |
| 1NO 1NC        | 0,5 µm gold plating | 593 566 000  | 593 561 000 |
|                | 2 µm silver plating | 593 566 100  | 593 561 100 |



|         |                     |             |             |
|---------|---------------------|-------------|-------------|
| 2NO 2NC | 0,5 µm gold plating | 593 567 000 | 593 564 000 |
|         | 2 µm silver plating | 593 567 100 | 593 564 100 |



### Mounting



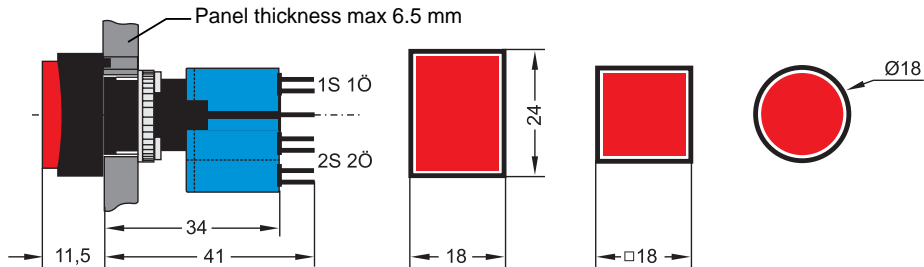
1. Turn the slot of the red locking pin parallel to the dovetail of the switch body.
2. Slide the contact block onto the dovetail.
3. When the switch is in off position the contact block must be pushed firmly into position and held there.
4. Secure by turning the red locking pin a quarter turn in an clockwise direction with a suitable screwdriver.



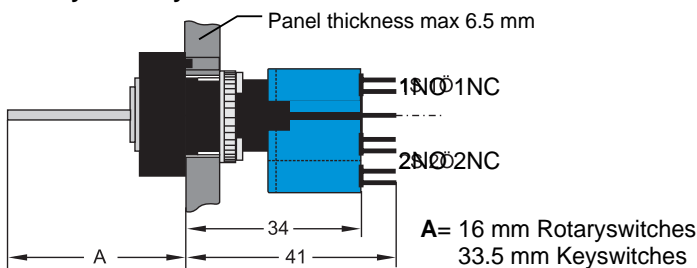
# Panel Mounted Products Series TH25

## Dimensions

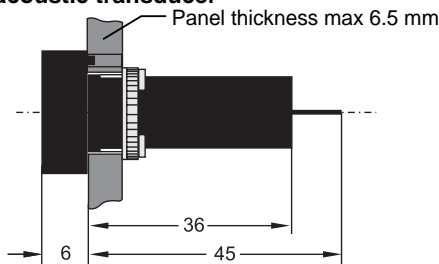
### Switches and indicators



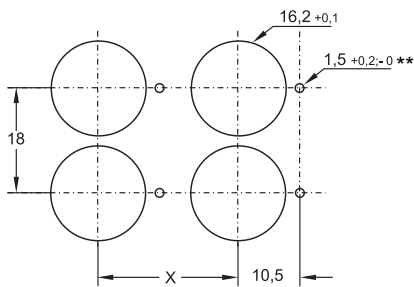
### Rotary- and keyswitches



### Electroacoustic transducer



### Panel cut-outs product series TH25

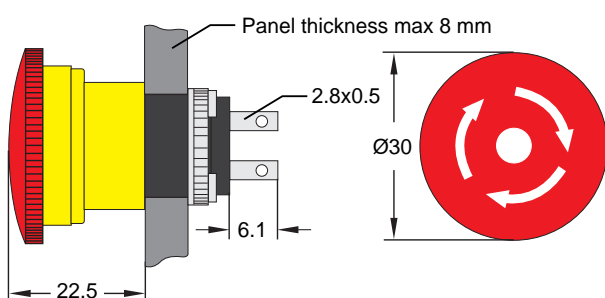


Panel cut-out min. distance X [mm]

|       |   |                             |
|-------|---|-----------------------------|
| 18x24 | 1 contact block +1 double contact block | 2 double contact blocks     |
|       | <b>24</b>                               | <b>30</b>                   |
| 18x18 | 2 single contact blocks                 | 1 single contact block      |
|       |   | 1 double contact blocks     |
|       | <b>18</b>                               | 2 double contact blocks *** |
| Ø18   | <b>as 18x18</b>                         | <b>as 18x18</b>             |

\*\*Hole for turning lock at bezel 18x24 mm

### Emergency Stop switch



### Mounting holes

