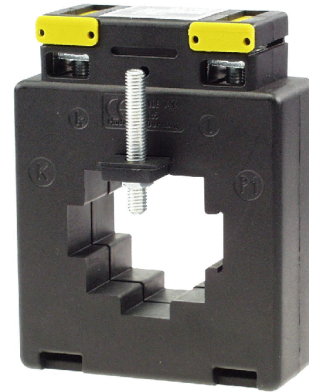


# Slip-over Current Transformer ASW

## Features

- Primary current from 50A op to 1000A
- Slip-whole for different square
- Easy handling
- Extended secondary terminal cover
- Innovative secondary clamp technology
- Break-proof plastic case
- Casting compound
- Isolation class E
- Accuracy class 1
- Frequency 50-60Hz



Order code: ASW -  1. -  2.

1. **Primary current** [A] (please state in clear text)  
 50, 60, 75, 80, 100, 125, 150, 200, 250, 300, 400, 500, 600, 750, 800, 1000
2. **Secondary current**  
 1        Output current 1A  
 5        Output current 5A

**Accessories** incl. by delivery:  
 1 Primary rail clamp, 2 Secondary terminal covers yellow, 2 wall-mounting clips

## Dimensions

